

NOTES

KEY:

- TV Aerial Point
- Telephone Point
- R Radiator Position
- DSSO
- Ex Side Ventilation extract
- S.W. Drainage
- Rainwater drainage
- Wall light
- Low voltage light fitting
- Low energy light fitting
- Heat detector
- Kitchen Unit pelmet light switch
- Light switch
- 2-way light switch
- External Bulkhead light fitting
- PIR light switch

KEY:

- f.d.30 sec 1/2 FR selfclosing door
- W.G. 1 Window number
- R1.4 Room number
- MK03 Beams
- Walls Removed
- Walls over/under
- GAS
- Electricity
- Telecom
- Water

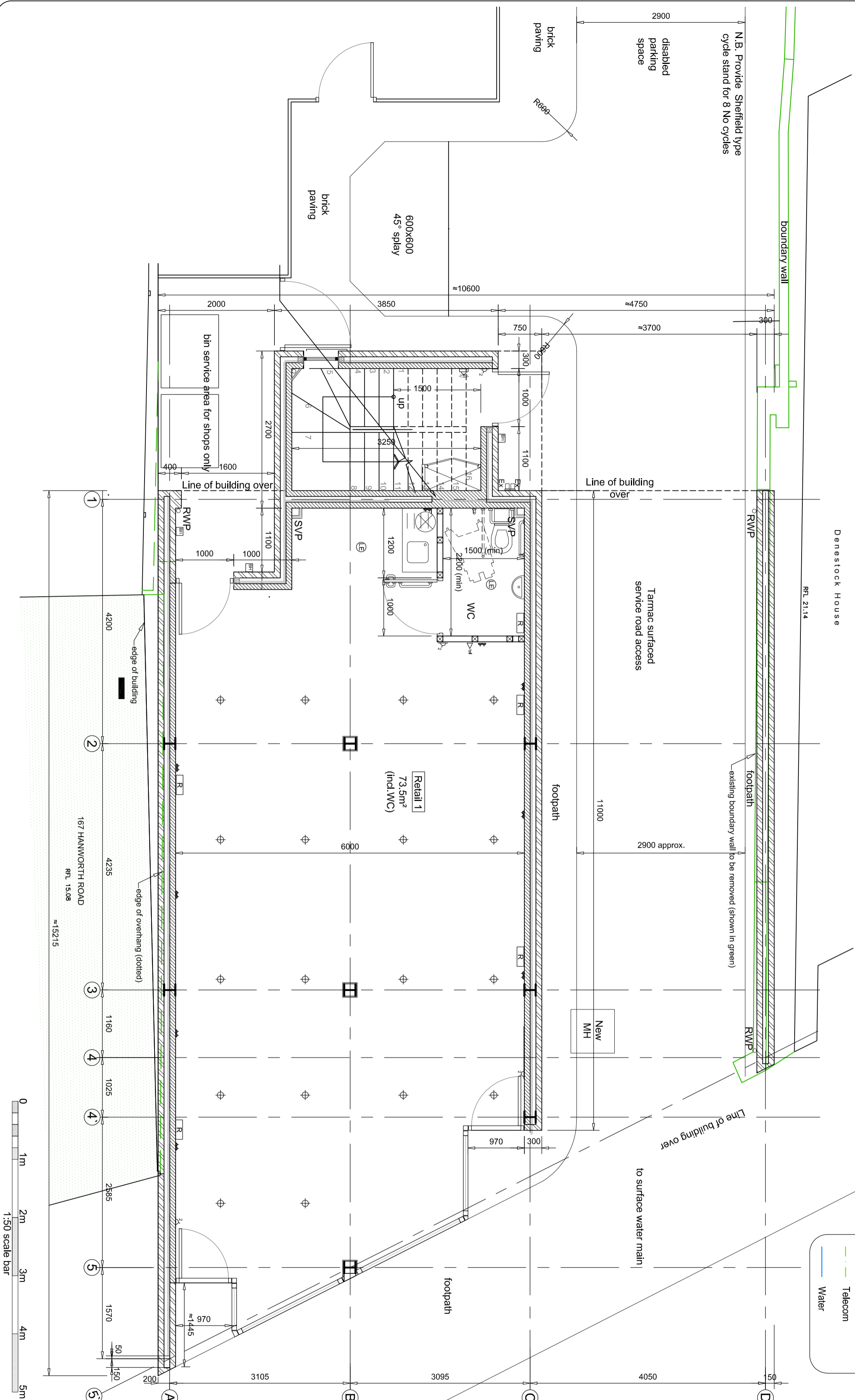
FIRE SAFETY EQUIPMENT AND SIGNAGE KEY

- automatic smoke detector
- BS:5839-1 - Type L1
- Emergency low voltage light fitting w. battery backup
- fire escape keep clear
- Internally illuminated fire escape sign

All steels to be encased in 2 layers fireproof plasterboard or similar to achieve 60min fire resistance.

N.B. Drainage layout indicated in the drawings is preliminary and for information only. The contractor to provide a detailed drainage design

- WALL TYPES:**
- Type 1 - Internal Partition**
 - 12.5mm wallboard
 - 70x50 new studs
 - bathroom walls filled with rockwool quilt
 - 12.5mm m.r. plasterboard to bathrooms
 - Type 2 - External Cavity Wall**
 - 102mm Outer Leaf Brickwork
 - 50mm Ventilated Void
 - 50mm Celotex Insulation
 - 100mm Lightweight Blockwork
 - Inner leaf
 - 12 bonding coat with 3mm plaster skim
 - Type 3 - Separating Wall Construction**
 - 13mm lightweight plaster (min. mass per unit area 10kg/m²)
 - 215mm block core, 110mm coursing, density 1840kg/m³
 - 13mm lightweight plaster (min. mass per unit area 10kg/m²)
 - Type 4 - External Cavity Wall**
 - 102mm Outer Leaf Brickwork
 - 100mm Ventilated Void
 - 102mm Outer Leaf Brickwork
 - Type 5 - Internal Cavity Wall**
 - 12 bonding coat with 3mm plaster skim
 - 100mm Lightweight Blockwork leaf
 - 50mm Ventilated Void
 - 100mm Lightweight Blockwork leaf
 - 12 bonding coat with 3mm plaster skim



Client
Mr. Jasvirinder S Gill and Mr. Randeep S Gill

Project
163-165 Hanworth Road
Hounslow TW3 3TT

Title
Proposed Ground Floor Plan

ST S Engineering Ltd
58 Crossway, Welwyn Garden City, Hertfordshire, AL8 7EE
Tel: 01707 695466 Fax: 01707 692006
Web: www.sts-se.co.uk Email: sta@sts-se.co.uk

Drawn	DS	Date	Sep'15	Scale	1:50
Checked	MN	Date	Sep'15		
Approved	SS	Date	Sep'15	Size	A2

Drawing No. **1509-925-001** Rev. **L**